



# Southeastern Antique Radio Society

In this issue . . .

President's page	page 2
Secretarial scribbles	page 3
Famous Radio Benches	page 4
The Beginning of the End	page 5
Classifieds	page 7

Spring 1999

## DIFFERENT STROKES FOR DIFFERENT FOLKS

KRIS L. GIMMY

THIS ARTICLE IS A LIGHTHEARTED LOOK AT VARIOUS TYPES OF RADIO COLLECTORS. NO DISRESPECT IS MEANT TO ANYONE, AS WE ALL SURELY SHARE AT LEAST SOME OF THESE CHARACTERISTICS AT LEAST SOME OF THE TIME. THIS IS MEANT TO BE A HUMOROUS ARTICLE. IT IS ALSO TRUE, AS I'M SURE YOU'LL AGREE WHEN YOU READ IT.

You learn a lot of interesting things in a hobby such as collecting antique radios. One of those things is that other people may have a very different approach to collecting than you do. Some of these approaches seem silly to me. But, who am I to judge? I have one friend who calls me "Mr. Deco" and who thinks my collection is trivial because it contains so few radios of historical significance. We see each other at meets and he says, "Hey Mr. Deco, I saw one of those vulgar plastic radios you like over in space 126." I reply, "I saw one of those old clunky DeForest boxes you like in the first row." And so it goes—it's Different Radios for Different Collectors.

Everyone knows that us collectors of "art-deco" radios are crazy. I mean, who else would pay \$1,000 for a plastic radio that originally sold for \$12, that won't play anymore, and has a ridiculous name like Tom Thumb? Having established that, let me poke some fun at some of the other types of collectors that we all know about.

*Johnny One-Note* collects only one make of radio (Zenith, Philco, RCA, for example). He won't even look at other radios. He never says the make of a radio, just says things like "I found a nice 12-S-245 at the Elgin meet." Also runs want ads nobody can figure out: "Wanted - special pulley for Q236 unit."

*Conan the Destroyer* buys up antique radios needing a bit of work (cathedrals, tombstones, Atwater Kents). Piles them up under a canvas in the carport, or in a damp basement, and lets them rot away.

*Captain Console* loves big consoles; can't pass one up. Soon has so many that they run him (or his spouse) out of house and home.

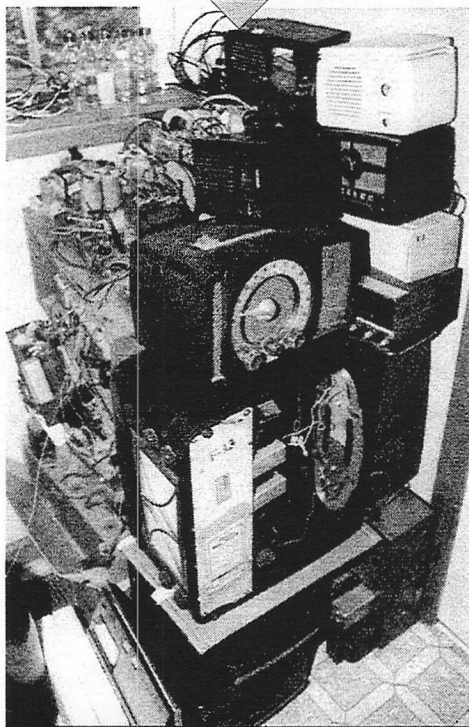
*The Celebrity Radio* New to the hobby, he pays big bucks for a common radio because "Elvis once listened to it" or some other celebrity story just as feeble. The ultimate in overpriced collectibles.

*The Radio Junkyard* He fills a backyard building with interesting, but badly worn radios. Partially disassembles each radio until parts are hopelessly mixed up. (But, this one is a good source of parts if he will sell them.)

*Low Dollar* can't pass up a radio under \$20. Soon has hundreds of common radios. Spends a lot eventually, but never has a nice radio.

*Top Dollar* buys top-of-the-line radios (E. H. Scott, Stratosphere) that have serious problems. Never gets them restored because parts, or cabinet repairs, would cost too much.

*The Dreamer* talks his whole life about owning his dream radio. Never takes the steps needed to get it.



Quick quiz: Which type of collector does this unsightly pile of radios belong to?

PRESIDENT'S PAGE

Our Spring season is off to a good start, and the first swap meets of the year have been successful. The earliest one in our region was organized by Brad Jones in February at Greensboro, North Carolina. Larry Smith and I attended the one-day meet and had a great time. The weather was beautiful, and except for a chilly start at daybreak most everyone was outdoors even though a building was available in case of inclement weather. There were about 30 vendors, and the quality and quantity of items were good. I picked up a few little treasures, including a very nice "Radio Mike," and as usual, Larry got his share of good projects.

Our own SARS Spring Meet on Saturday, March 13th came off very well with about 40 vendors (about the same as last year), but I felt that it was down a bit in quality from past meets. However, everyone seemed to enjoy themselves, and our host hotel, the Fairfield Inn, received very high marks as a venue. The location is excellent (easy to find and very accessible) and the amenities offered (refreshments and facilities) were outstanding.

The next weekend in March was the Charlotte meet, and it was very well attended by our club. It seemed to me that the meet was as big as previous years, except that attendance fell off dramatically on the second day (Saturday). The weather was absolutely perfect, and everyone seemed to be having a great time. The auction was held on Friday afternoon, and it was the best one that Charlotte has ever had. Because of many high quality items from an estate, there was a very large crowd there and the prices were generally high. Not many of our club members did well at the auction, and I was among many that came away empty-handed—and

I love auctions!

One thing that I finally decided to do at Charlotte was to venture beyond the threshold of financial pain and to make the big jump up into the upper levels of collecting. I acquired my first (and second!) Catalin radios. I now am the proud owner of a Fada bullet and a Garod. They are really fabulous radios and they were priced right for me. I never really thought that I would ever be able to find or afford a high quality Catalin radio. Now that I'm hooked, I've got to exercise a great deal of self control in the future. Now that the radios are home, I can't pass by them without admiring them on the shelf and truly appreciating their beauty. And you know, that's what is really most important to me as a collector—to be able to constantly enjoy the things that I've acquired and not to just get things to add to a list. We're only here for a short time and we can't take them with us when we leave. It reminds me of something someone recently told me: They've never seen a hearse towing a trailer!

And speaking of trailers, I just acquired a 5-by-8-foot covered trailer. I got it for the main purpose of loaning to anyone in the club for traveling to out-of-town swap meets to haul radios and equipment. It's a really solid trailer that rides very well. All one needs is a trailer hitch and an electrical wiring hookup.

I just mailed off our club's application to become a chapter of the Antique Wireless Association (AWA). We only needed to have at least five members of our club who were members of the AWA (we easily met this requirement), and to be able to abide by their basic by-laws. Their biggest concern is that we have liability insurance for all of

our events. We've always gotten along before, and so we'll have to look into this as situations arise. They are also very concerned about excluding any items at any swap meets that contain the element mercury. They must have had a serious problem about this in the past. Anyway, they are to have a meeting in the next month and will discuss and possibly vote on whether to accept us as a chapter. Then we must decide whether we can live with any restrictions to be placed on us. We shall see. The AWA is a fine organization and I'm sure that we will enjoy our affiliation with them if it occurs.

As time goes by for our club, we need to cycle in new people into the responsibilities of operating our club.

(Continued on page 3)



**ORIOLE 5 TUBE AC SUPERHETERODYNE**

- ADVANCE 1938 MODELS
- BEAUTIFUL BAKELITE CABINETS
- BROADCAST AND POLICE
- UPRIGHT OR LAY-DOWN IN ONE
- PENTODE POWER OUTPUT

**HIGHLY ENGINEERED CHASSIS**  
Special high gain antenna coil — gives 2 to 3 times gain of conventional antenna circuits. Built of finest parts to high degree of efficiency throughout. Tubes used: One 6AR, one 6DG, one 75, one 41, one 80. Full AVC on two tubes. Output over 1 watt. Full vision illuminated airplane dial.

**AMAZING PERFORMANCE**  
Tunes Full Standard Broadcast band plus most popular police band, 175 to 225 K.C. Full size dynamic speaker delivers true, undistorted output. Set is small in size but outperforms many of larger design.

**STRIKING BAKELITE CABINETS**  
Beautiful glossy, modernistic cabinets of genuine moulded bakelite. Black cabinet has chrome trimmings with black and silver grille cloth. Ivory cabinet has bronzed gold trimmings with gold and yellow grille cloth. Cabinets are of double utility — either lay-down or upright with same ease of tuning.

**FOR 110 V. AC 50-60 CYCLE**  
No. 156-52, Glossy Black Bakelite Cabinet. List. \$19.95.  
Your Cost, Each. \$12.95.  
Lots of 3, Each. **\$12.45**

No. 155-52, Glossy Ivory Bakelite Cabinet. List. \$22.95.  
Your Cost, Each. \$14.45.  
Lots of 3, Each. **\$13.95**



**ORIOLE 6 TUBE AC-DC SUPERHETERODYNE**

- ADVANCE 1938 MODELS
- BEAUTIFUL BAKELITE CABINETS
- 2 BAND WITH 3 BAND UTILITY
- 2" ELECTRO-DYNAMIC SPEAKER
- BEAM POWER OUTPUT

**A POWERFUL SET**  
Genuine I.C.A. Licensed Superheterodyne chassis with every advanced feature. Rigorously built of finest parts and carefully engineered throughout. Tunes 2 wide bands, giving nearly 2 band efficiency, covering Standard Broadcast, Police, Amateur, Aviation, and Entire 40 Meter Foreign, (215-1765 KC and 2165 to 7000 KC).

**PURE, SWEET TONE**  
Full 2" Electro-Dynamic Speaker delivers ample volume without distortion. 1 1/2 Watts Beam Power Output. Tubes used: One 6AR, one 6DG, one 75, one 25B6G, one 25Z5, and one 12X2. Full A.V.C. on two tubes. Full vision illuminated airplane dial.

**NEW BAKELITE CABINETS**  
Cabinets of beautiful glossy bakelite, combining the novelty feature of being "upright" or "lay-down" with same ease of operation. BLACK cabinets with chrome trimmings and black and silver grille cloth. Ivory, gold trimmings with gold and yellow grille cloth.

**FOR 110 V. AC or DC CURRENT**  
No. 156-6Y, Glossy Black Bakelite Cabinet. List. \$24.95.  
Your Cost, Each. \$16.45.  
Lots of 3, Each. **\$15.45**

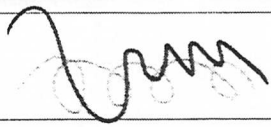
No. 155-6Y, Glossy Ivory Bakelite Cabinet. List. \$27.95.  
Your Cost, Each. \$17.95.  
Lots of 3, Each. **\$16.95**

Both 5 and 6 Tube Supers in Amazing New Glossy Bakelite Cabinets

Turn One Way—**A LAY-DOWN!**

Turn Up on End—**A TABLE MODEL! Same Ease of Operation!**

SCRIBBLES FROM THE SECRETARY  
BOB NIVEN



SARS Meeting February 8, 1999

The meeting was called to order by Gordon Hunter at 6:45 PM. Sid Griffin was speaker for the evening. There were 18 people in attendance.

Mr. Sid Griffin, General Manager of WIMO AM, 1300 kHz in Winder, GA described his years in radio. He started in 1956 at the WETO radio station. He has worked with several stations in Alabama. Sid noted that big-band radio is a rapidly dying breed. WIMO's format is country, due to the desires of the listening audience. WIMO has a 1000-watt solid-state transmitter. The old system had type 833 transmitter tubes.

The Show & Tell category was novelty radios.  
The meeting was adjourned at 8:30 PM.

SARS Meeting March 8, 1999

The meeting was called to order by Gordon Hunter at 6:45 PM. There were 19 in attendance.

AWA membership for the club was discussed again. The requirement for general liability insurance at meets was an issue. Event insurance is expensive and it was felt there was no real advantage or disadvantage in AWA membership.

We discussed our outdoor swap meet on March 13th and the Charlotte meet on the 20th. There is also a hamfest on the 20th at Jim Miller Park.

Reviewed past non-renewed members.

Marty Reynolds set up an e-mail reflector for SARS members. If you're not already getting these reflector messages and you want to join, ask Marty (marty@aa4rm.ba-watch.org) to sign you

up. To contribute an e-mail to the reflector, send it to sars-refl@g10.com. This will broadcast your message to all signed-up SARS members via e-mail.

The featured speaker was Mr. Jack Bolton., introduced by Marty Reynolds. Jack gave an interesting talk on the radio broadcasting business. Jack worked at several early AM stations.

Show & Tell produced some great radios, including a WWII German Messerschmidt 109 radio set with accessories..

The meeting adjourned at 8:05 PM.

SARS Meeting April 12, 1999

Lee Garen gave an informative and entertaining talk on his varied background in radio and TV, mostly in Florida. He is also a comedian and a magician. He currently does the Long Drive Home show on WGKA, 1190 AM, 3 to 7 PM weekdays.

The show and tell category was radios without tubes. Many interesting items showed up, including one British WWII radio, brought by Marty, with valves, not tubes.

John Pelham announced his resignation as newsletter editor and publisher, effective with the Summer 1999 issue, or earlier if a volunteer



Jack Bolton regales an appreciative crowd at the March meeting.

steps forward. Volunteers for this exciting club post are eagerly sought. See Gordon Hunter or John Pelham for details.

Gordon put forth the dates of July 17 or 24 as possibilities for our summer swapmeet at the Fairfield Inn in Alpharetta. By a show of hands, July 17 was voted the preferred date for the meet.

(This month's report by John Pelham, guest secretarial stand-in.)

*(President's Page, continued from page 2)*

I have truly enjoyed my contributions to the club, and I will be ready to pass the baton next year. One of the most important facets of our club is the editing and publishing of our outstanding newsletter. John Pelham took over from Norm Schneider two years ago and has just done a super job. But John has asked me to announce that he is ready to pass it on to someone new, and so we must find a replacement. He has agreed to put together this Spring issue and the next Summer one, but he would like to have a replacement by the Fall. I hope that we will have a volunteer step forward soon. Thanks, John, for all the work that you do on each and every

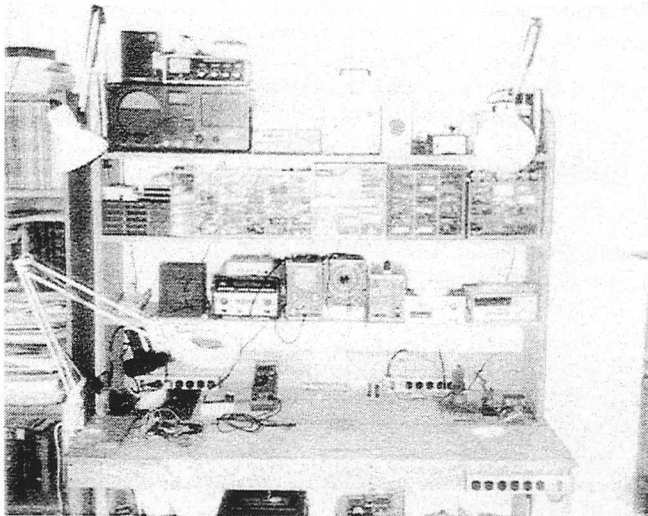
issue, and for putting up with the usually late President's Page.

With all the big summer meets coming up soon, get ready for some fun times. Remember our monthly meetings. We've been having some great speakers and show-and-tells. And also mark your calendar for July 17th—our next SARS meet at the Fairfield Inn in Alpharetta.

# RADIO BENCHES OF THE NOT NECESSARILY RICH AND FAMOUS

COMPILED BY JOHN PELHAM

HERE ARE PICTURES OF THE RADIO BENCHES OF FOUR RELATIVELY ACTIVE SARS MEMBERS. THE FIRST PERSON WHO CONTACTS THE NEWS-LETTER EDITOR AND CORRECTLY ASSOCIATES EACH BENCH WITH THE CORRECT SARS MEMBER BEFORE JULY 1, 1999 WILL WIN FREE SARS MEMBERSHIP FOR THE YEAR 2000! THE CORRECT ANSWERS WILL BE PUBLISHED IN THE NEXT NEWSLETTER.



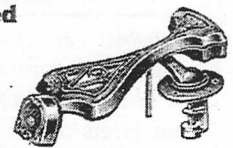
**Lafayette 5 TUBE AC-DC PUSH-BUTTON SUPER**

Here is the radio that is making for a new world in broadcast listening, multi-tube Lafayette AC-DC. Superior high speed push-button tuning, ease of operation and complete to make it one of the great Lafayette radios of all time. Our 5-tube home use set will really compare any set. For one you need three vacuum tubes and one set of three tubes. Beautiful decorative cabinet. ADVANCED SUPERB CIRCUITRY. Over the finest multi-purpose tubes, one covering the complete broadcast band from 535 to 1625 at 1 1/2 to 1 3/4 meters.

**PUSH-BUTTON TUNING:** Select any one of four stations, instantly correct, instantly. Automatic circuit to set or change station after each broadcast without tuning knob for all intermediate stations. **MAGIC ANTENNA:** Complete receiver built-in loop built on structure from rear end for no external antenna necessary. **BEAM-POWER** OUTPUT. Powerful single vacuum tube amplifier. Tubes used: 25A2, 25Z6, 25C2, 25L6G7. Beam power output: 25W. 2500 milliwatts more than any other. **BEAUTIFUL PLASTIC CABINET:** Attractive streamlined design. Available in gleaming ivory or rich-looking Walnut finish. **\$9.45 EACH.** **YOUR COST, SIMPLY.....\$10.45** In Lab. wt. 2. **FOR 20-year supplier read, look.....\$4**

On the left, a product from a 1941 Lafayette catalog. The pick-up on the right was advertised in a 1933 Baltimore radio catalog. The 33-1/3 RPM speed was in existence earlier than I thought—I guess it was the *microgroove LP*, also at 33-1/3 RPM, that was "invented" by Columbia in the late 1940s.

## Special RCA-VICTOR Two Speed Pick-up 33 1/3 and 78 R.P.M.



The most advanced counter balanced pick-up assembly available, used on the new 1934 automatic combination Model 331. Pick-up Head, designed according to the latest developments of the RCA engineers, shows a substantially flat frequency response from 50 to 5000 cycles. Arm is heavily weighted to provide best needle pressure on both 33 1/3 and 78 R.P.M. records. Base of arm is mounted in a special rubber cushion so that pick-up rides free at all times. Unit comprised of Pick-up Head No. 6542 with an impedance of 28 ohms, Pick-up Arm No. 6543 and Escutcheon No. 3779. Provided with shielded connecting cable, coupler and stop rod. Finished in dull silver. Shpg. wt. 8 lbs. **\$5.17** **KA388—Your Cost Each.....\$5.17**

# MARVELO 8 Tube Receiver

## POWER SINGLE CONTROL COMPLETELY SHIELDED

Greater Range—Beautiful Tone Quality

This truly wonderful receiver is the result of long years of painstaking, expensive development of an eight tube set that would get maximum efficiency from each and every tube yet should be easy of control. So finely adjusted and balanced is this highly perfected receiver that there is but one control and absolutely no trimmers of any kind. While three knobs appear on the panel, only the lower one operates the tuning. The smaller left knob provides critical control of volume—the other sensitivity.

### A Set of Great Range

Four stages of radio frequency precede the detector—three are tuned, one untuned. This arrangement makes for the keenest sensitivity. Thus the weakest far away signals are picked up, gradually and strongly amplified before delivery to the power detector. There is a marked increase in clarity as well—reception is stabilized—selectivity greatly sharpened. We have never seen a receiver with wider range and power, blanketing the country with ease and speed, due to this simple, effective and sharp tuning control.

### Superb Tone Qualities

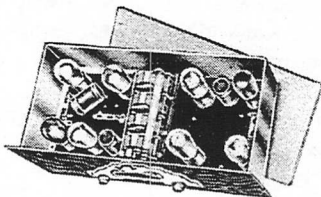
Experienced set users know that resistance coupled audio amplification produces the sweetest, purest, softest, most faithful reproduction. To retain this beautiful tone quality, yet provide the wanted great volume without mixture of tubes was a problem perfectly solved by our engineers in this great receiver. Three stages are used, one coupled for the ultra powerful 112 power tube. And, we guarantee that this receiver will work on a good "B" Eliminator (such as the Barawik Supreme) without "motor-boating." With the required 180 volts impressed on the plate circuit, there is no hissing, just an unbroken sweet, uniform, natural flow of audio frequencies. Beautifully clear, exquisitely precise throughout the entire range of organ, the cello and the human voice and with exceptional volume, the output of this receiver is truly a revelation to the lover of fine radio broadcast reproduction. It is not excelled even by the highest priced receivers.

### Completely Shielded

All parts are entirely surrounded by a metal housing over which is fitted a metal cover. This also keeps the delicate instruments away from dirt, dust and prevents casual tampering. Together with the metal panel, this construction provides an effective shield to shield stray fields between stages and suppress outside disturbing interference.

### A Highly Perfected Receiver

Each unit is of the finest quality obtainable. The coils, condensers, sockets (fractional detector), all controls, are all precision made. Assembly is by highly skilled radio techn



icians with the result that this is a splendid appearing, very tuned and unattended set. It will operate out on a 75 to 100 foot outdoor aerial, but will work at shorter distance with a 100 ft.

### Try It 10 Days at Our Risk

We know what your verdict will be. See the details of this liberal test offer on page 2 of this catalog.

### An Unmatched Value

Barawik methods of manufacture and distribution bring you this marvelous receiver at about half what you would pay through the ordinary channels. You will be amazed at the tremendous value it represents after you have seen and tried it.

### WHOLESALE PRICE LIST

1B13191—Complete, but without accessories. \$52.35  
Shipping weight, 28 lbs. List, \$189.00, NET.....

### For Battery Operation

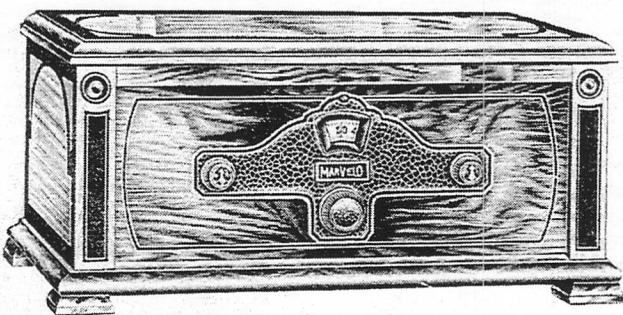
1B13192—See complete, with all accessories for Battery operation, including one 201A type, one 201A type and one 112 type power tubes, one Barawik 120-amp, "A" Storage Battery, four large 45 v. "D" Batteries, 112 volts, "C" Bell Cords and complete Antenna and Ground outfit. Shipping weight, 147 lbs. List, \$156.00, NET..... \$92.95

### For Socket Power Operation

1B13193—See complete for Socket Power Operation, including five 201A type, one 201A type and one 112 type power tubes, Barawik Supreme "B" Eliminator, Alox "A" Eliminator, 112 volts, "C" Batteries and necessary Ground and Antenna outfit. Shipping weight, 140 lbs. List, \$188.00, NET..... \$105.50

### The Chassis Only

For those who wish to select a fine console for this wonder receiver, we listed on pages 111-112, we offer the chassis set. 1B13194—Marvelo 8 chassis only, without set, net \$48.10  
Shipping weight, 140 lbs. List, \$82.00, NET WHOLESALE.....



THE BARAWIK CO., CHICAGO, U. S. A.

# New Glass Bridge Braced

## VITAVOX Radio Tubes

Microphonic Noises Positively Eliminated

55c Net



Tubes are the most important part of your radio set. Without good tubes your set is worthless. It takes many years of research and requires much skill to manufacture a really good radio tube. Here is a tube that is produced by the finest engineers in the country who have spent years in the development of good radio tubes. In this tube is concentrated the knowledge gained by research and experience.

Microphonic noises have been completely eliminated by the unusual construction used in the Vitavox tubes. The most important of the many improvements is the glass bridge feature. This bridge works on the same principle as a tuning fork which is damped by holding the prongs. The plate, grid and filament are welded into their proper positions and are then insulated from each other by the glass bridge or bond—a perfect insulator. This bridge then holds the elements so that they cannot vibrate and cause microphonic noises. This point is very important for a microphonic tube will do nothing but cause continuous howling and ruin the entire program. Nothing is worse. You are absolutely assured of getting only high grade tubes when you buy Vitavox tubes. Each tube is passed thru very exacting tests before it is allowed to leave the factory. It is built so sturdily that when you get it, the bolts and jars of shipping have not affected it in any way. Put a set of these tubes in your set and notice the difference immediately. The stations will come in more clearly, they will have more volume than ever before. In fact, your set will sound like a new one. Put them in new sets and you will never be troubled with poor volume and lack of sensitivity. They are unquestionably one of the best tubes on the market of the world today.

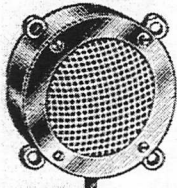
Our great buying power allows us to offer these tubes at a low price so that every one can become acquainted with the wonderful results possible when good tubes are used. Put in a complete set of Vitavox tubes and be assured of the very best radio reception.

Patented thoriated tungsten filament assures long life and better service. The filament voltage necessary is 5 volts. Filament current 25 amperes. Plate voltage 22 to 90 volts, depending upon the use to which the tube is put. 90 volts should be used for amplifiers and 22 to 45 for detectors.

2B6518—Vitavox Radio Tube Type 55c  
201-A. List Price, \$1.75. EACH.....  
Ten lots, EACH, 53c. Fifty lots, EACH.....50c

The two advertisements above are from a 1927 Barawik Co. ("one of radio's oldest institutions") catalog. Below, from the 1933 Baltimore Radio catalog. That "D104" type microphone has been around a long time!

## PIEZO-ASTATIC Crystal Mike



Unquestionably one of the finest microphones ever developed. Has found great favor amongst both amateurs and public address system owners. It requires no field or button current—has no hiss—cannot "pack"—may be used in any position and has a high output making unnecessary any great amount of pre-amplification. Due to its high impedance it makes unnecessary the need for a matching transformer thus permitting it to be connected directly to the grid of

the amplifier input tube. Case is 3" in diameter and 1" thick and is finished in polished chromium. Diaphragm is screen protected. Complete with 6 ft. shielded cable. Shpg. wt. 2 lbs.

XM13363— \$12.60  
Your Cost.....

# Don't miss the ... SARS SUMMER SWAPMEET

Saturday, July 17, 1999

Dawn until noon

Outside, in the rear parking lot at

The Fairfield Inn

11385 Haynes Bridge Road

Alpharetta, GA 30004

(770) 663-4000

Admission: sellers \$5, all others free.

# OLD NEWS OF THE ELECTRONICS INDUSTRY

COMPILED BY JOHN PELHAM

IN THE 1960s AND 1970s, MANUFACTURER AFTER MANUFACTURER LEFT THE RADIO-ELECTRONICS BUSINESS, SUCCUMBING TO THE ONSLAUGHT OF FOREIGN COMPETITION. ALSO, OLD BRAND NAMES WERE REVIVED AND SHUFFLED FROM ONE COMPANY TO ANOTHER AS THE CONSUMER ELECTRONICS INDUSTRY ENDEAVORED TO SORT ITSELF OUT.

THESE ARE ITEMS FROM "INDUSTRY NEWS" COLUMNS OF SERVICE INDUSTRY PUBLICATIONS OF THE DAY. (THANKS TO BLAKE HAWKINS FOR GIVING ME A WHOLE PILE OF OLD MAGAZINES TO GO THROUGH. WE KNEW THEY'D BE GOOD FOR SOMETHING!)

Emerson and DuPont brands are being discontinued by the national Union Electric Corporation, as reported in *Home Furnishings Daily* and *Radio & Television Weekly*. Also terminated is the contract under which Admiral supplied home-entertainment products to Emerson during 1971 and 1972. Emerson will continue to manufacture and market their Quiet Kool line of room air conditioners.—February 1973

Another electronics manufacturer is quitting business. According to a recent article in *Home Furnishings Daily*, Symphonic Electronics Corporation is ceasing operations, and will sell most of its inventory to the Morse Electro Products Corporation. The Lynch Corp., sole owner of Symphonic, says that Symphonic will assemble some of the components on hand into finished instruments, then manufacturing will cease. Reason for the closing is said to be significant losses over the past two years.—March 1973

Motorola is withdrawing from the manufacturing and marketing of home-audio products, according to *Radio & Television Weekly*. It is said this one line of products is being dropped to permit greater emphasis on color and b-w TV.—August 1973

A famous old name returns to the electronics marketplace this August when the Atwater Kent Radio Corporation makes the first deliveries of a new line of stereo-radio consoles. In the 1920s, one of the leading radio manufacturers was the original Atwater Kent Company, whose founder was A. Atwater Kent. The company ceased operations in the 1930s and many of the radios are in demand now as antiques.—August 1973

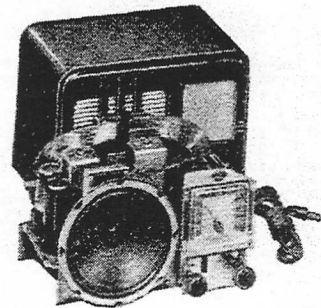
An attempt by Mercury Electronics Corporation to acquire rights to the Emerson name has failed. According to *Merchandising Week*, National Union Electric Corporation, which owned Emerson before it ceased operations, since then has opened discussions with several other companies who are interested in buying the name.—November 1973

Major Electronics Corp. has acquired from National Union Electronics Corp. the exclusive rights to manufacture and market home-electronics products under the Emerson brand name. According to *Merchandising Week*, the agreement with National Union limits Major's rights to the United States and Canada. The Emerson label will be used on all major home-entertainment products including stereo components, phonographs, compacts, tape recorders and radios. Air conditioners and other appliances will continue to be produced and marketed by national Union through its Quiet Kool division.—February 1974

A decline of color TV sales has some analysts worried that more manufacturers might leave the business, states the *Wall Street Journal*. Of the 20 American TV makers flourishing in 1968, eight have either eliminated color production or gone out of business, three others have been sold or are scheduled to be sold, and several of the remaining dozen are in financial danger.—June 1974

## KNIGHT "BUILD-YOUR-OWN" KITS

Famous Knight "Build-Your-Own" kits are carefully engineered for quick, easy assembly and top performance. Anyone can build a Knight kit—no wiring experience or knowledge of schematic symbols is necessary. All include pictorial (picture type) diagrams and clear, detailed instructions. Supplied complete with tubes, punched and drilled chassis, hardware and all parts; less only hook-up wire and solder.



Model 275 "Ranger" Superhet

Anyone can quickly and easily build the Knight "Ranger" superhet receiver from the pictorial diagram alone. No previous kit-building experience is necessary. No knowledge of schematic symbols is required. Chassis is already drilled and punched; no drilling or metal cutting required. Tube sockets and ground lugs are pre-mounted on the chassis. IF transformers are factory-adjusted at 456 kc; set is easily aligned without any need for instruments. A soldering iron, pliers, and screw-driver are the only tools needed. Complete instructions are furnished. The "Ranger" gives you finer performance, greater power and more sensitivity than any other receiver kit in its class.

ENGINEERED FOR TOP PERFORMANCE. Superheterodyne circuit is carefully engineered for high sensitivity and selectivity, plus exceptional stability. IF transformers are high-Q type. First audio amplifier has plate decoupling and contact potential bias. Has good tracking accuracy. Automatic volume control (AVC) reduces "blasting" and fading. Covers the full AM standard broadcast band, 535 to 1620 kc. High-quality parts are used throughout. Chassis is made of heavy-gauge steel cadmium-plated to resist corrosion. All metal parts are die-punched to assure perfect fit. Built-in, highly efficient loop antenna provides strong signals. Also includes terminal to permit connection of outside antenna if desired.

QUALITY KNIGHT FEATURES. Uses latest Alnico V PM dynamic speaker. Expert design assures good baffling of the 5" speaker—provides clear, full-toned reproduction. The Knight "Ranger" is supplied with the following tubes: 12SA7GT—mixer; 12SK7GT—IF amplifier; 12SQ7GT—detector-AVC-audio; 50L6GT—audio output. Rectifier is a 35Z5GT. A big extra feature—the cabinet is handsomely styled and sturdily made of walnut-finished bakelite. Size: 9x6 $\frac{3}{4}$ x6 $\frac{3}{4}$ ".

COMPLETE KIT. Every part is furnished—down to the smallest piece of hardware: tubes, loop antenna, walnut bakelite cabinet, 5" speaker, dial with pilot light, etc. Less only wire and solder. For operation from 105-125 volts, 50-60 cycles, AC, or DC. Shpg. wt., 8 lbs.

83 S 275. NET. . . . . 17.85

### JFD RESISTANCE LINE CORDS

#### AC-DC LINE CORD RESISTORS



Supply proper voltage for tubes wired in series across 115 volt lines. 135, 160, 180 and 200 ohm cords can also be used for 1-amp, 15 and 20-watt fluorescent units. \*For 45Z3 tube. †For 3-way battery portables. 6' long. Wt., 6 oz.

Stock No.	Type	Ohms	NET EACH
49 T 522	2180	135	82c
49 T 520	2181	160	
49 T 519	2182	180	
49 T 518	2183	200	
49 T 517	2184	220	
49 T 516	2185	250	
49 T 515	2186	290	
49 T 524	2187	300	
49 T 512	2188	330	
49 T 511	2189	350	
49 T 510	2190	390	
49 T 525	2197*	500	1.21
49 T 526	2157*	900	

#### UNIVERSAL AC-DC TYPE 2175



Replaces AC-DC cords from 220 to 300 ohms. Select desired resistance leads and clip off unused leads. For either standard three terminal or tapped cord for pilot bulbs. 6' long. Shpg. wt., 5 oz.

49 T 530. NET. . . . . 1.21

Type 2192. Step-down Line Cord. For 110-volt AC-DC radio sets from 220 volts AC-DC. With plug. 560 ohms, 0.2 amp. cap. For sets using .15 amp tubes. Wt., 5 oz.

49 T 580. NET EACH. . . . . 1.70

#### "MAKE-UR-OWN" RESISTANCE CORDS

Color-coded asbestos-covered resistance wire. For supplying exact line cord resistance needed. Shpg. wt. for 10', 1/2 lb.; 25', 1 lb.

49 T 560. 30 ohms resistance per foot.  
49 T 570. 60 ohms resistance per foot.  
NET Per Foot . . . . . 11c  
25 feet for . . . . . 2.25

At left and right:  
From a 1954  
Allied Radio  
catalog. If only I  
had known then  
what parts to tell  
my dad to buy  
and squirrel away  
for later.

**CLASSIFIED ADVERTISEMENTS**

Free to SARS members. To place an ad, contact the editor by e-mail ([john@radiophile.com](mailto:john@radiophile.com)), phone (770-476-0473) or postal mail (1185 Bend Creek Trail, Suwanee, GA 30024).

WANTED: Zenith model 3000 TransOceanic, Zenith 500H transistor radio, 1960s-vintage tube stereo tuners and amplifiers. Jeff Priluck, (770) 393-9487 evenings.

MESSAGE: The Web site, John Pelham's Antique Radio Collection, has moved. The new URL is <http://www.radiophile.com>. Please visit, and update your bookmarks!

WANTED: Radios for my collection: Any Arvin "Rhythm" series radio (ca. 1937) such as the Rhythm King, Queen, Master, or Junior. (I already have the Rhythm Baby and Maid.) Zenith models 811 or 12S267. Coronado 43-8160 (see photo). John Pelham, 1185 Bend Creek Trail, Suwanee, GA 30024. (770) 476-0473. E-mail: [john@radiophile.com](mailto:john@radiophile.com).

WANTED: Arvin Rhythm Baby knobs. They're bakelite, and look hexagonal (stop-sign-shaped) from the front. John Pelham, 1185 Bend Creek Trail, Suwanee, GA 30024. (770) 476-0473. E-mail: [john@radiophile.com](mailto:john@radiophile.com).

WANTED: Pre-WWII plastic radios, especially unusually small models, or models made of plaskon or beetle. John Pelham, 1185 Bend Creek Trail, Suwanee, GA 30024. (770) 476-0473. E-mail: [john@radiophile.com](mailto:john@radiophile.com).

**Special information request:** It seems that all of the SARS members are now somewhat united (strength in numbers, united we stand, etc.), so we may have a small, or maybe not so small, radio library. I am seeking information on a series of Airline Radios. It seems that they were produced in 1951, and it appears that they used the same cabinet mold that Majestic used in 1938 for the "Charlie McCarthy" radio. I can find information on the "Lone Ranger" and "Rudolph" (pictured below) version of this Airline. They are in books that I have.



A while back, I became aware of the "Fruits & Flowers" version if this radio. But when I found out about the "Poinsettia" version, I began to wonder how many radios were in this series. Just

how many different versions are there?

Not only that, but the same cabinet mold was used by Majestic to make a Lone Ranger version in beetle plastic. I wonder if majestic made a whole series of these? If anyone in SARS-land has any written information or *any information at all* on these radios, would you please share with me? Johnny Hubbard, 2999 Osborne Road, Atlanta, GA 30319. (404) 231-9242. E-mail: [radioxxx@aol.com](mailto:radioxxx@aol.com).

**STRATFORD 7-TUBE DUAL WAVE SUPERHETERODYNE**

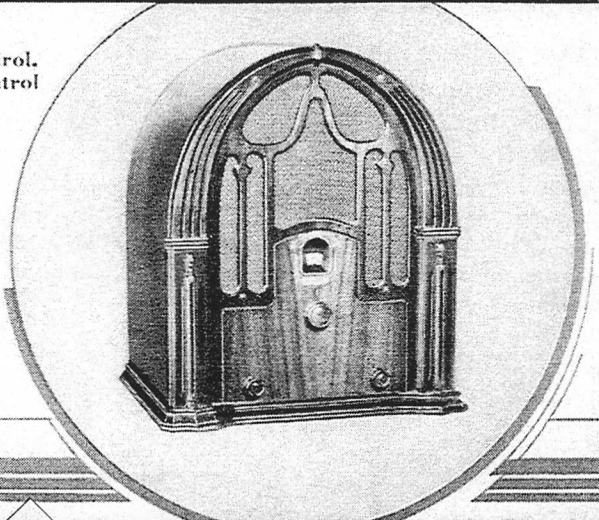
7-Tube Superheterodyne. Automatic Volume Control. Short Wave Police Bands. Single Dial Vernier Control

Seven Tuned Circuits—Three Gang Tuning Condenser—Power Detection—Dual Diode—Triode Second Detector—Single Switch for Long and Short Wave—Beautiful Cabinet in Fine Wood—17 1/2" high; 15" wide; 12" deep.

**\$ 22.50**

**COMPLETE • RCA TUBES**

Cat. No. 72  
For 110-120 V.,  
60 Cy. A.C. In-  
cluding 1-55, 1-  
56, 1-57, 2-58  
and 1-59 Tubes.  
Shipping Weight,  
34 lbs.



# Southeastern Antique Radio Society

P.O. Box 500025  
Atlanta, GA 31150

PRESIDENT: Gordon Hunter 770-475-0713 gwhunter@earthlink.net  
VICE PRESIDENT: Marty Reynolds 404-365-9280 marty@aa4rm.ba-watch.org  
SECRETARY: Bob Niven 770-586-5816 bobwiz@aol.com  
TREASURER: Frank Lindauer 770-934-4294 cad49@mindspring.com  
NEWSLETTER: John Pelham 770-476-0473 john@radiophile.com



Southeastern Antique Radio Society Spring 1999

## JOIN SARS!

Dues are \$15, payable on a calendar-year basis. (Dues are pro-rated during the year: After June 30, pay \$7.50 for membership for the remainder of the year.) Send payment with name and address to SARS at the address above.

## SUPPORT YOUR CLUB!

The Southeastern Antique Radio Society holds monthly meetings on the second Monday of each month at Piccadilly Cafeteria, 3400 Holcomb Bridge Road, Norcross, GA. Meetings start at approximately 6:30 PM. Most attendees arrive early and eat before the meeting. In addition to club business, meetings have a Show and Tell feature, where members bring items to display and discuss. All are encouraged to participate in this fun. See the schedule below, and map, right.

### 1999 SARS Show and Tell Schedule

- |                   |   |
|-------------------|---|
| <b>May:</b>       | "D" and "E" radios (Delco, Emerson . . .)         |
| <b>June:</b>      | Radio paper and/or paraphernalia                  |
| <b>July:</b>      | Unusual or noteworthy vacuum tubes                |
| <b>August:</b>    | Weird stuff (You define "weird!")                 |
| <b>September:</b> | "F" radios (Fada, Farnsworth . . .)               |
| <b>October:</b>   | Your favorite radio bought at the SARS Mega Meet! |
| <b>November:</b>  | "G" radios (General Electric, Grebe . . .)        |
| <b>December:</b>  | Anything goes!                                    |

